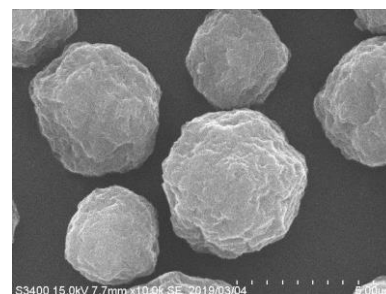
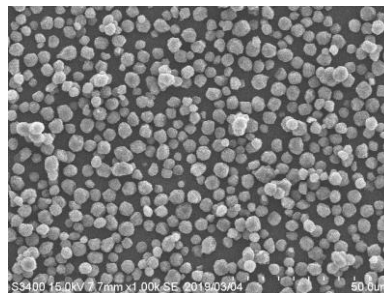
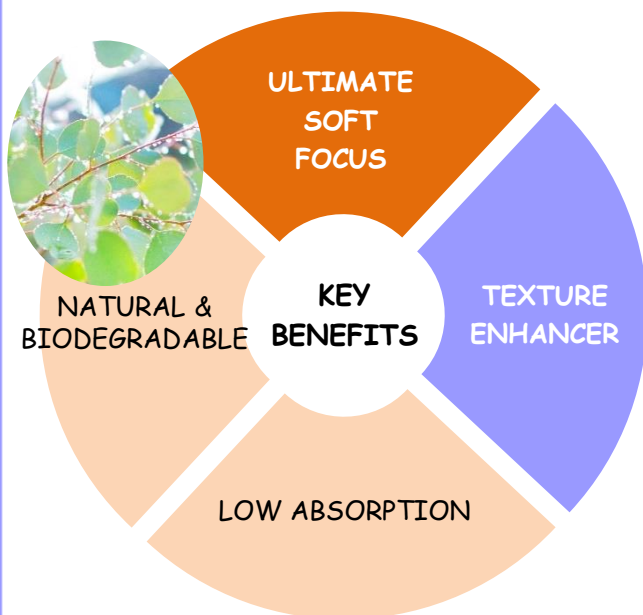


COMPOSITION

INCI Name

CELLULOSE



Use guideline

Emulsions/Gels:

- Incorporate after the emulsion/gel is formed.

Powders:

- Mix with other powders

Lipsticks:

- Add directly to the lipstick base
- Can keep shiny appearance by low absorption

Use level: up to 10%

Chemical and physical properties

- Globular powder
 - White to yellowish
 - Odorless
 - Superior hydrophilicity
 - Mean particle size = $4\ \mu\text{m}$
 - Specific area = $1\sim 2\ \text{m}^2/\text{g}$
 - Specific gravity: $0.45\text{g}/\text{cm}^3$
 - Oil absorption = $\sim 80\ \text{ml}/100\text{g}$
 - Biodegradable and renewable
- Biodegradability index > 67% according to OECD 301F standard



Formulation

- **pH:** useful over a wide range of pH
- **Heat:** stable
- **Treated pigments:** compatible with all DAITO's treatments
- **Alcohols:** compatible
- **Organic solvents:** compatible
- **Thickeners:** compatible with carbomers, xanthan gums, acrylic polymers (MAKIMOUSSE) and cellulose derivatives (MOISPRAY C)

Cosmetic benefits

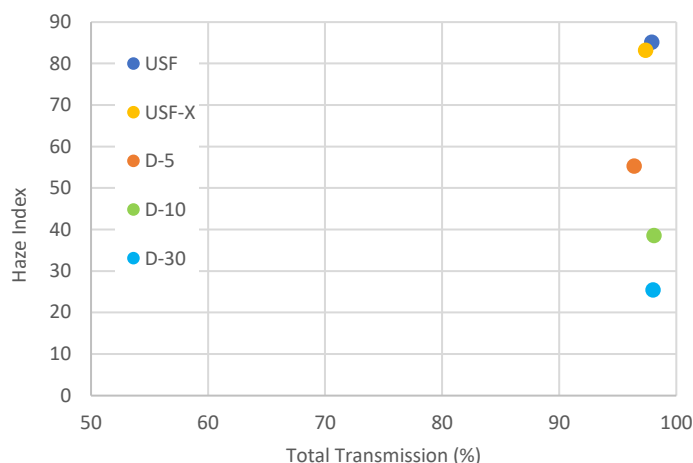
Method: Apply sample 0.05g ($2.5\ \text{mg}/\text{cm}^2$) on the artificial skin, and check the pore covering property after drying (2.5 hours).



Artificial skin

DLP/187 with 5% of
CELLULOBEADS USF-X

Soft focus effect



Smaller CELLULOBEADS show higher haze index.

CELLULOBEADS USF-X shows excellent light scattering effect (= soft focus effect) same as CELLULOBEADS USF (porous type).

Applications

LIQUID FOUNDATION

DL/J187 Ultimate Soft Focus
Liquid Foundation

LIP PRODUCTS

DL/J141 Natural Lip Plumper

Safety and regulatory information

Product safety: CELLULOSE produces non irritation to the skin and is non mutagenic. It is mildly irritating to the eyes.

Material Safety Data Sheets are available for all DAITO KASEI products.

REACH: CELLULOSE is exempted from registration

CELLULOSE is listed on the major chemical inventories such CTFA, CosIng, AICS, DSL, KCID, IECIC2003 and/or IECIC2014.

For additional information

Please contact:

DAITO KASEI EUROPE SAS
62 boulevard Henri Navier
Taverparc Bât 5.2
95150 Taverny - FRANCE
☎ : +33(0)1 30 40 01 01
☎ : +33(0)1 30 40 01 11
✉ : dkeurope@dkeurope.fr

HEAD OFFICE
DAITO KASEI KOGYO Co., LTD
1-6-28 Akagawa, Asahiku
Osaka - JAPAN
☎ : 81 6 6922 1632
☎ : 81 6 6921 9562

DAITO KASEI CHINA
6F/room 612
555 Wuding road Jing An District
Shanghai, CHINA 200040
☎ : +86 21 32 53 25 16

The information presented within this sheet is offered in good faith, and is based on our present state of knowledge. It is offered for informational and evaluation purposes only. Users of DAITO KASEI product should initiate their own testing to determine the suitability of this product for their intended purpose. DAITO KASEI assumes no liability or responsibility for any damage to person or property resulting from the use of this product or the incorporation of this product into any final formulation or product. Statements concerning the use of this product are not to be construed as a recommendation, suggestion or inducement to use the product in any way or within any formulation that is unlawful to create or sell, that violates any applicable regulations or that infringes upon any patent. No liability arising out of such a use is assumed.